

Role Title: Principal Visualisation Engineer

Department: IT

Job Family: IT

Job Level: 8

About the role:

The Principal Visualisation Engineer is a key strategic member of the Data Services team within Information Services which is accountable for the continual improvement of data usage and analytical capability throughout the business. They will operate as a technical specialist with regards to visualisation of data using modern technologies such as Power BI which will help transform the way the Society uses data to make business decisions.

Your primary responsibility as a Principal Visualisation Engineer will be to work with colleagues across the Society to understand and support their needs and support the development of tools to drive data driven decision making and drive better business performance.

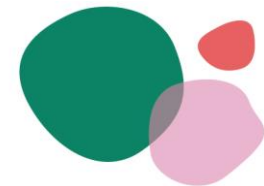
As a key contributor towards the analytics roadmap for the Society, regular stakeholder engagement upwards to Executive level will be vital to ensure positive relationships with those parties are maintained. This will allow the role holder to be the steering force in the Society of the direction it drives towards in this area. Excellence in this area will include ensuring that key data points are linked, data is validated, but presented in an exciting visual manner for users to engage with, while the role holder will be championing and becoming a figurehead of best practice in data strategy and usage.

Additionally, the role requires vendor management, liaising with suppliers, contractors and external partners and customers and maintaining relationships in these areas to ensure a positive experience and a high level of customer service is provided to the Society.

What you'll be doing:

Project Management

- To be a lead point for significant IT projects which impact the whole Society – leading the conversation to ensure that appropriate data is readily available from new software solutions and that this fits within the Society Analytics strategy.



- Ensure that business groups and users are provided with appropriate communication throughout the any development or project process and use the feedback to ensure the success of the proposed solution.

Data & Analytics

- Engaging in forums and conversations and with key partners within the business to enable the Society and its colleagues to be more data mature and consider analytics in all areas of business functions.
- Ensuring that all key Society data is held within the Society's Data Analytics platforms and there is a constant roadmap to ensuring this is both maintained and built upon.
- Leading the conversation with key stakeholders across the business about the direction of travel for development in analytics and increasing functional capabilities and driving the Data Services development roadmap with those stakeholders.
- Lead the business to develop data knowledge and understanding within those areas where any individual works; to enhance the ability to deliver solutions and provide information to support business decisions and goals.
- Facilitate end-to-end testing of our data solutions through reconciling data sets and reports to source systems.
- Deep dive into business ways of working through workshops, process and data mapping and seek to understand and implement concepts which prove how visualisation and reporting can improve business outcomes.

Technology

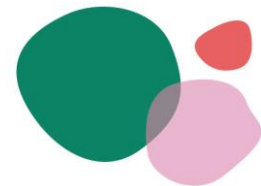
- Having insight in new technology and techniques and recommending new ideas, technologies and suggest guidance as to the future IT data strategy and how that may impact wider IT strategy.
- Work with the line manager and IT Scrum Master to help prioritise and refine the team backlogs to help deliver a constant roadmap of deliverables.
- Gather and scrutinise MI, reporting and analytics requirements from Midcounties business stakeholders.
- Design and develop complex integrations and solutions to enable better functionality and data availability throughout the business.
- Ensure that the solutions conform to the Midcounties IT systems and data architectures and follow the CAB process where a change is to be made.
- Ensure data repositories produce consistent and re-useable data within Midcounties analytical systems.
- Develop reports and dashboards when required using the preferred visualisation tools and software allied to a standardised template.

Customer Service

- Contribute towards the team resolving assigned support calls efficiently and effectively with the maximum amount of customer care and within agreed SLAs.
- Ensure a positive customer experience for all customers of Midcounties IT department.
- Provide expertise to define Midcounties IT data and information policies, aligned to industry best practice.

About You:

- Strong leadership and interpersonal skills allowing for high quality conversations at all levels.



- Experience in leading or having a positive transformative impact in a business in the area of data insight, visualisation and analytics.
- Over three years' experience in Power BI development or similar data visualisation software.
- Five years' experience in later versions of SQL Server (On-Prem or Azure) development and/or administration.
- Project Management Experience
- Able to prioritise own workload to meet varied deadlines
- Accurate, organised and methodical and the ability to forward plan
- Customer focused, can deliver service to required standards
- Strong leadership experience and seen as an expert in leading, coaching and developing the skills and capabilities of team members in order to share knowledge, increase team skill level and improve the standard of service delivery
- A strong external network
- Excellent communicator with the ability to galvanise teams across the Society to influence both behavioural and process changes.
- Desirable – Experience in Agile resourcing methodologies
- Desirable – Experience in producing high quality documentation for business use including but not limited to; statement of works, system design, support and user documentation.
- Desirable – Three years' or more experience in SSIS Development or similar ETL tool such as Azure Data Factory.

Scope:

- Reports to: Business Intelligence Manager
- Number of direct reports : Zero
- Budgetary Control: Ensure ongoing opex costs relating to the technology are kept under control and in line with IT budgets which could be up to £100k per annum. Also has responsibility for ensuring Capital Expenditure projects are within a limit of £100k per project.
- Key internal contacts are all internal departments and trading groups up to an Executive level.
- Key external contacts are the Society vendors